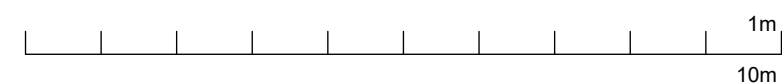
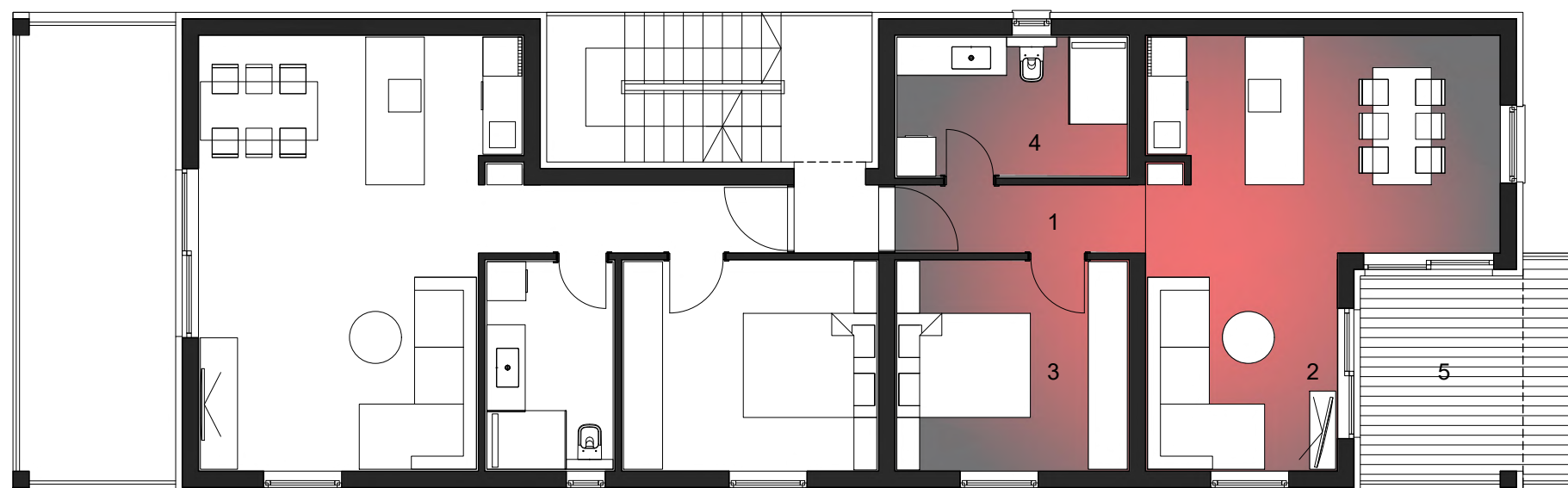


stan 3.2.b



| STAN 3.2.b | | tlocrtna površina | | neto korisna površina | |
|----------------------------------|---|-------------------|-----------|-----------------------|-----------|
| 2-sobni stan na 1. katu zgrade 3 | | | | | |
| 1 | hodnik | 4,04 | m2 | 4,04 | m2 |
| 2 | dnevni boravak s kuhinjom i blagovaonicom | 28,04 | m2 | 28,04 | m2 |
| 4 | spavaća soba | 11,70 | m2 | 11,70 | m2 |
| 5 | kupaonica | 7,92 | m2 | 7,92 | m2 |
| 5 | terasa - natkriveni dio | 7,82 | m2 x 0,50 | 3,91 | m2 |
| | terasa - nenatkriveni dio | 3,06 | x 0,25 | 0,77 | m2 |
| UKUPNO | | 62,58 | m2 | 56,38 | m2 |
| parkiralište 3.2.b, vel. 2,3x5 m | | 11,50 | m2 x 0,25 | 2,88 | m2 |
| SVEUKUPNO | | 74,08 | m2 | 59,25 | m2 |